

PIONEER

(800) 824-8844

Introducing the Next Generation of Security

The only **PROACTIVE** Solution



AI Hub

- Qualcomm Snapdragon 4-core AI Processor
- 64GB Ultra-fast Flash Memory Storage
- Lightning-fast Processing & Classification
- Smart AI always Learning & Improving



Next-gen Camera

- Wireless with Long-lasting Battery
- Built-in LED Ring
- 104 dB Speaker and Siren
- 2-way Audio
- Weatherproof IP65
- 100 ft. Wireless Range

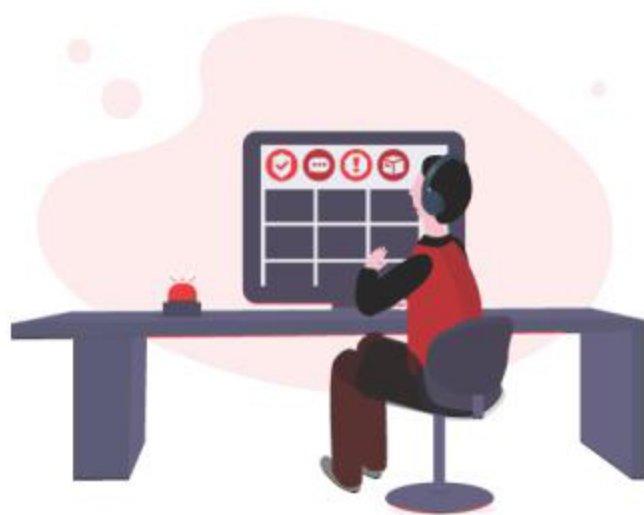


LiveSentinel™ Guards

- 24/7 On-Duty
- Professional responses to potential threats
- Privacy Mode gives you full control

How do we intervene BEFORE a break-in to PREVENT it?

Learn how Pioneer pairs Artificial Intelligence with Human Intervention to fix security for good.



00".⁰⁰

Pioneer Security Yard Sign

The yard sign is a deterrent that says: "This is the wrong property to mess with."

PREDICT.

00".⁵⁰

Camera Detects Motion

Motion immediately wakes the outdoor Deep Sentinel camera, streaming video to the hub over a private secure wireless connection.

02".⁰⁰

AI Assesses the Situation

Artificial Intelligence (AI) runs on the hub to identify potential threats. The AI engages the bright red LED ring on the camera and escalates events to a live guard for realtime review.

PREVENT.

10".⁰⁰

Guards Engaged

A guard at our LiveSentinel center is assigned to the live video stream and analyzes the video for suspicious activity. Guards respond in seconds.

13".⁰⁰

Guard Intervention

LiveSentinel guards intervene using 2-way audio over the Camera's 104dB speaker or siren. Guards are highly trained to STOP criminals before they escalate the situation.

PROTECT.

30".⁰⁰

Law Enforcement Contacted

Guards call law enforcement if needed. These calls to law enforcement are taken seriously because LiveSentinel reports a "verified" active situation including suspect description & suspicious behavior. Property owner is contacted immediately.



Call us today: Pioneer Security Services (800) 824-8844